



engineers • scientists • innovators

Oil & Gas



Engineering a Safer World



www.mmiengineering.com



About MMI Engineering

MMI Engineering provides technical consulting services to most industry sectors, specializing in the management of man-made and natural hazards.

To make a difference to the levels of risk you are actually exposed to takes more than just risk assessment – it requires the application of sound engineering and management practices.

Risk management is far more than just an interesting intellectual exercise; which is why we also specialize in delivering end-to-end pragmatic solutions to help our clients to manage and actually reduce their risk exposures.

We Advise Clients in the Following Sectors:

- Oil & Gas;
- Nuclear;
- Chemical and Petrochemical;
- Conventional Power;
- Clean Energy;
- Water Utilities;
- Defence and Security;
- Insurance.

Our Core Skills Include:

- Risk Management;
- Analysis and Simulation;
- Design and Assessment;
- HAZARDS Modeling;
- Structural Engineering;
- Asset Integrity Management;
- Reliability Engineering;
- Fluid Mechanics;
- Geotechnical Engineering.

“At MMI, we believe in true risk management, which to us, is engineering beyond assessment.”



MMI Engineering in the Oil & Gas Industry

We provide specialized technical consulting support on a global basis to Operators, EPCs, Consultants and Regulators - assisting in the management of technical, commercial and safety risks.



Our services include:

- Safety and Risk;
- Process Safety;
- Flow Assurance;
- Production Efficiency;
- Structures and Foundations;
- Major Accident Hazards;
- Fire and Blast Engineering;
- Riser Design;
- Plant Integrity;
- Security;
- Research and Development.

We employ engineering and scientific personnel from research, design, construction, operations and project management backgrounds - many with experience in challenging environments such as highly seismic, high hazard, deepwater, subsea High Pressure / High Temperature (HPHT) fields, cryogenic applications and arctic regions.

Even with challenging project and operational timescales, MMI brings innovation to projects and operations that depend on our core practice areas of risk management, design and engineering, analysis and simulation, fluid mechanics and geotechnical engineering.

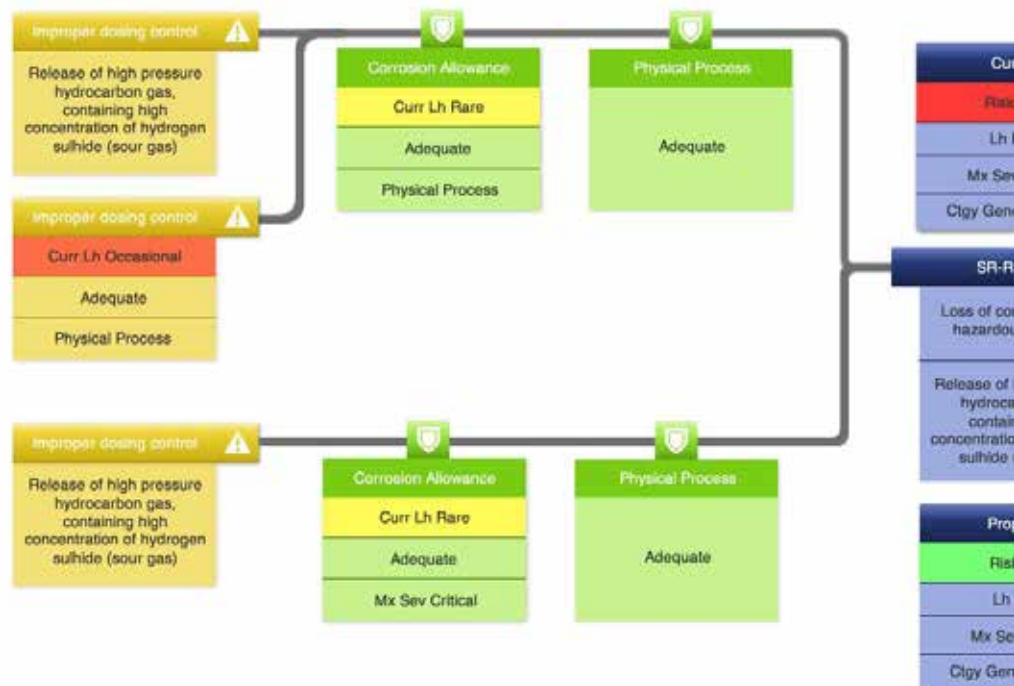
Risk Management

MMI understands all aspects of the risk management process, from the Identification, assessment of consequences and design, build and maintenance.

We know that Risk Assessment is only the important first step to true risk management which requires in-depth analysis to prevent major accidents. Between us, we have hundreds of years of experience 'across the Bowtie'.

- 'Knot' of BowTie
- FMEA
- BowTie
- PFEER / SCE / Process
- Safety Management
- ALARP Demonstrations

- HAZID;
- HAZOP;
- CHAZOP;
- Human Factors;
- Structural Integrity;
- Metocean studies;
- Shipping Risks;
- Helicopter Risks;

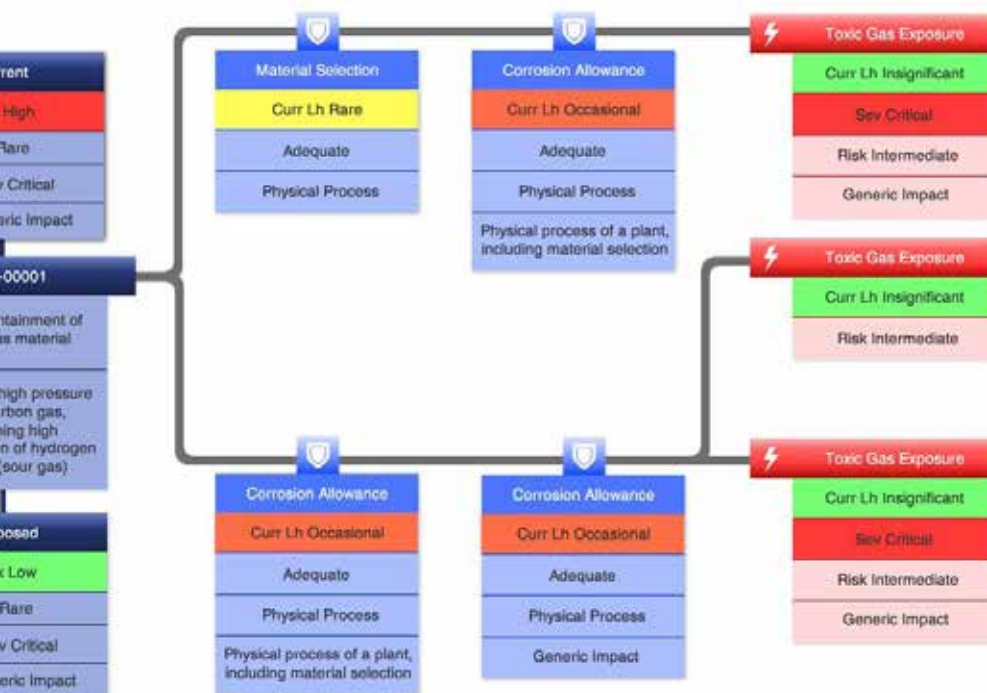


- Risk Based Inspection;
- Risk Centred Maintenance;
- Human Factors Studies;
- Structural Integrity;
- Process Modeling;
- Erosion Modeling;
- Dropped Object Studies;
- Ship Impact Studies.

the very earliest consideration of inherently safe design through Hazard and Operability (HAZOP) studies and implementation of risk reduction measures.

Implementation and through-life management of measures to reduce the likelihood and consequences of

- Risk Assessments;
- QRA;
- HAZOP / FMECA;
- Failure Mode and Effects Analysis;
- Process Safety Compliance Audits;
- Management Systems;
- Options / Cost Benefit Analysis.



- Structural Fire Response;
- Blast Response;
- Emergency Response;
- Evacuation Studies;
- Escalation Studies.

- Passive Fire Protection Systems;
- Fire and Explosion Risk Assessment;
- Blast Wall Design;
- Gas and smoke Dispersion;
- Fire and Gas Detection Systems;
- Process Safety Training for Responders.

Understanding Hazards & Risks

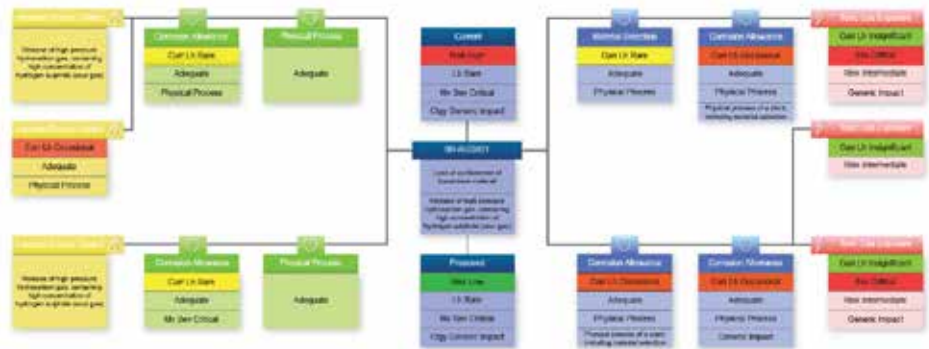
MMI fully services the client's risk identification and reduction needs, providing more than just a single discipline service.

Health, safety, environment & security services include:

- HAZID and HAZOP Facilitation;
- Safety Case Preparation and Thorough Reviews (SCR, COMAH, Seveso II, etc.);
- Implementing process safety (PSM, SEMS, etc.);
- Quantitative Risk Assessment (QRA);
- Safety Management System (SMS) Development and Auditing;
- Safety Critical Element (SCE) Identification;
- Emergency Systems Survivability Analysis (ESSA);
- Escape, Evacuation and Rescue Analysis (EERA);
- Failure Modes Effect and Causality Analysis (FMECA);
- Demonstrating ALARP;
- Due Diligence;
- Security Vulnerability Assessments;
- Environmental Assessments;
- Functional Safety Assessments and Verification (SIL);
- Reliability Modeling Assessments.

Risk management tools & techniques used include:

- BowTie;
- ENVID;
- Fault Tree+;
- HAZCON;
- HAZDEM;
- HAZOP;
- HAZID;
- HIRA;
- LOPA;
- MMIQRA;
- ATEX;
- RAM.



BowTie Analysis using Meercat's RiskView™

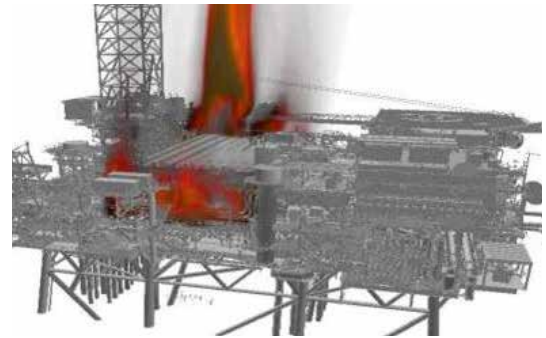


Quantification of the Hazards

Modeling using industry validated tools and methodologies allows hazards to be clearly quantified so their impact can be determined.

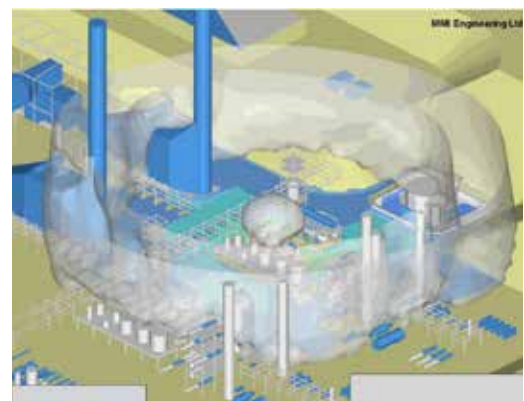
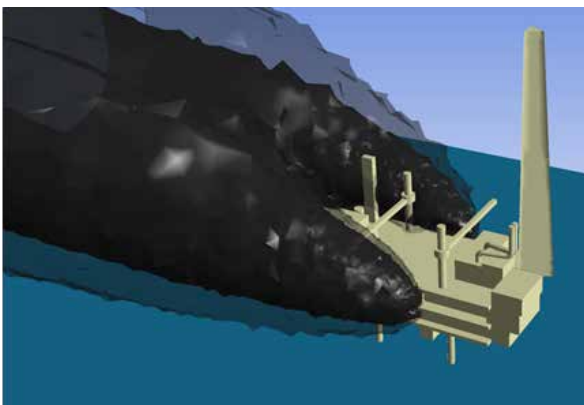
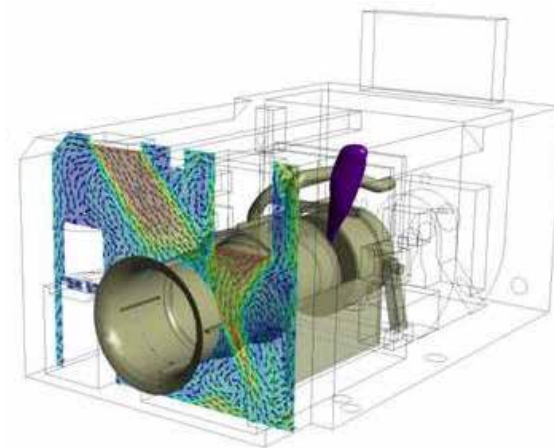
Hazard modeling includes:

- Gas dispersion and explosion;
- Jet and Hydrocarbon Fires, Pool Fires and BLEVEs;
- Design Accident Load (DAL) Development;
- Smoke and Toxicity Dispersion and TR Ingress;
- Seismic Hazard;
- LNG, CNG, CO₂, NO_x, H₂ & H₂S Release;
- Flare Radiation;
- Subsea Release Modeling.



Modeling tools used include:

- ANSYS CFX;
- FLACS;
- Cirrus & FRED;
- FDS;
- FlareSim;
- Kameleon KFX;
- OPENFire;
- OpenFoam;
- PHAST;
- VessFire.



Hazard Response Analysis

Analyzing structures, plant, pipelines and equipment that are subjected to major hazards requires specialist knowledge and tools to ensure that the non-linear, dynamic response is predicted correctly.

Hazard response services include:

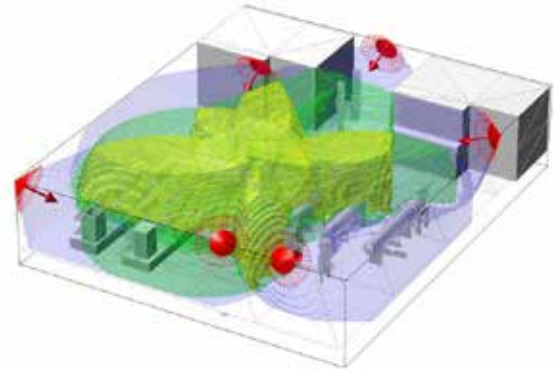
- Fire Load Response Analysis;
- Blast Response Analysis;
- Seismic Response Analysis;
- Extreme Environmental Load Pushover Analysis;
- Engineering Criticality Analysis;
- Fitness for Service Evaluation;
- Ship Impact and Dropped Object Assessment;
- Flow Assurance and Erosion Modeling;
- Fire and Gas Detector Layouts;
- Pipeline and Network Modeling.

Analysis tools used include:

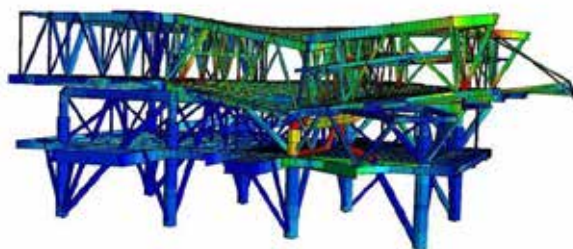
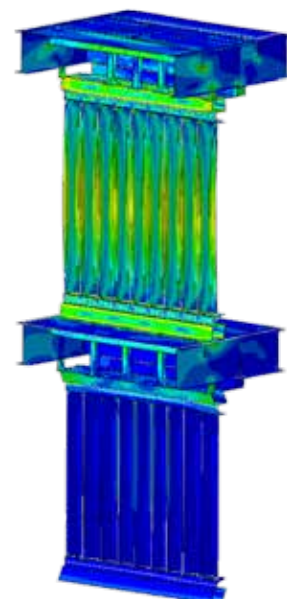
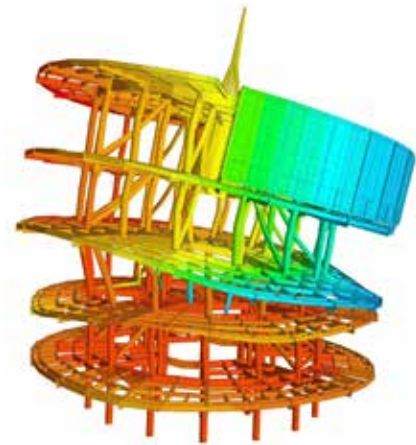
- ABAQUS;
- ANSYS;
- LS-DYNA;

- SACS;
- USFOS;
- Staad;

- CFX;
- Fluent;
- FlowMaster;
- Pipenet.



Fire Detector Optimization



Hazard Mitigation

With the loads and response captured, MMI's engineers can design and detail specialist, cost effective mitigation measures that are fit for purpose and manage the risks - true risk management.

Blast Resistant Design

- Steel and Composite Blast Walls;
- Control Room Design and Retrofit;
- Portable Building Design;
- Blast Relief Panels;
- Equipment and Pipe Supports.

Passive Fire Protection (PFP) Design

- Structural Coating Optimization;
- Fire Barriers;
- Process Vessels;
- Riser, Valve and Actuator Protection;
- Penetration Sealing.

Cryogenic Spill Protection (CSP) Design

- Coating Specification and Design;
- Insulation System Design.

Active Fire Protection System Design

- Full Firewater System Design;
- Hydraulic Calculations for Ringmains.

Seismic Assessment and Design

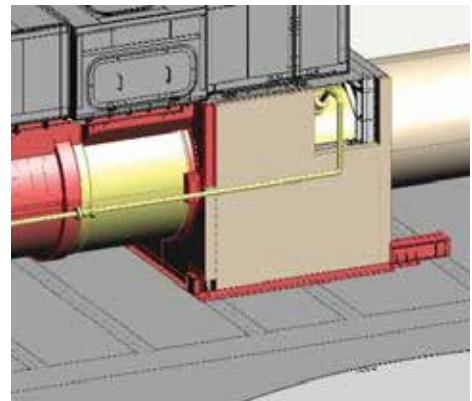
- Retrofit and Strengthening;
- Seismic Isolation Techniques;
- Structures, Plant and Control Systems.

Impact Protection

- Subsea Dropped Object Protection;
- Topside Protection Systems;
- Ship Impact and Berthing Fender Systems;
- Security Vehicle Barrier Systems.



Blast Wall with Energy Absorption



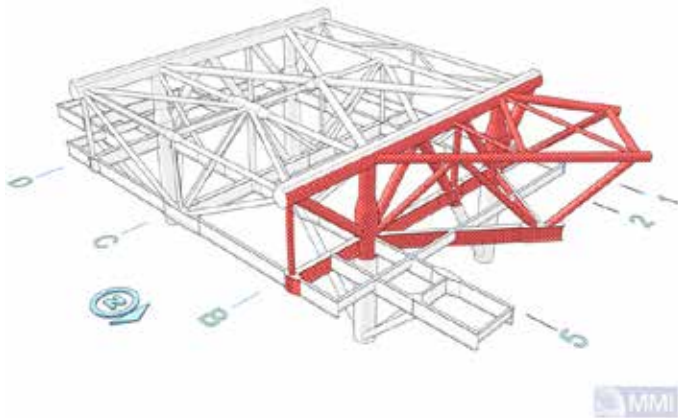
ESD Valve Fire and Blast Protection



Firewall PFP Design

Passive Fire Protection

MMI are world leaders in the area of Passive Fire Protection, be it R&D, the assessment, remediation and long term management of aging systems, or the full design, assessment and auditing for new projects.



PFP Consulting

- Research and Development;
- Code, Standard and Guidance Development;
- Fire and Blast Testing, Design and Assessment;
- Product Certification Assistance;
- Materials and Systems Specification;
- Training and Competency.

PFP Scheme Development

- Fire Risk Assessment;
- Design Accident Load Development;
- Jet and Pool Fire Modeling;
- Fire Load Response Analysis;
- PFP Scheme Design and Optimization;
- Independent Inspection and Auditing.

PFP Inspection & Integrity Management

- Inspection and Maintenance Strategy Development;
- Detailed Inspection and Condition Assessment;
- Assessment of Material Degradation;
- Repair Strategy;
- Inspection and Audit of Repairs;
- Life Extension Management.



Hazards Awareness & Communication

At MMI, we pride ourselves on making complex engineering analysis accessible to a wide range of audiences.

Design services undertaken by MMI include:

- Multi-Media Development;
- Training;
- Simulation and Visualization;
- Accident / Incident Investigation.

MMI Engineering has recently developed and patented a tool that allows for the real-time simulation of major hazard accidents and the injuries to individuals exposed to them. The tool was developed in the Unity game engine, which means it can be deployed across a range of operating systems including PC, Mac, Web, iOS, Android and, more recently, the immersive Virtual Reality platform Oculus Rift. QUARTS allows the user to navigate their own working environment in an immersive, virtual environment and to experience exposure to major developing incidents.

QUARTS was originally designed for situational awareness training for fire and explosion awareness, but could be adapted for many different purposes, such as:

- Induction Training;
- Site Orientation;
- Fire Fighting;
- Emergency Response Training;
- First Responder Training;
- Evacuation Analysis.

We also see the potential of Oculus in providing:

- Pre-Visit Orientations;
- Inductions;
- Coxswain training;
- Signage;
- Optimization;
- 3D User Interfaces.



QUARTS Experienced Through
Oculus Rift at Hazards 24

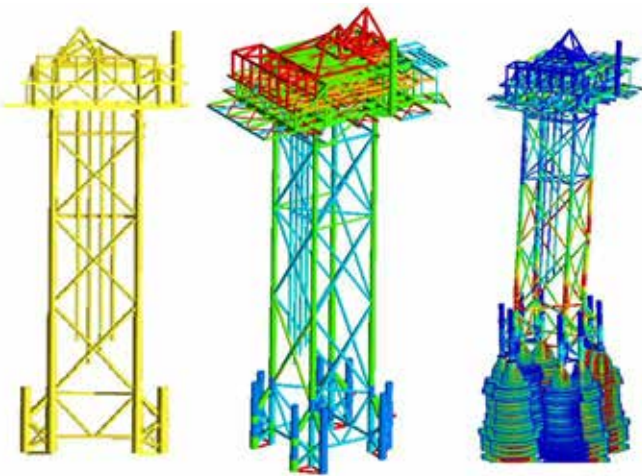
Structural Integrity Management

Our expertise in asset integrity and asset reliability assessments makes us the ideal choice for asset integrity management for major operators.

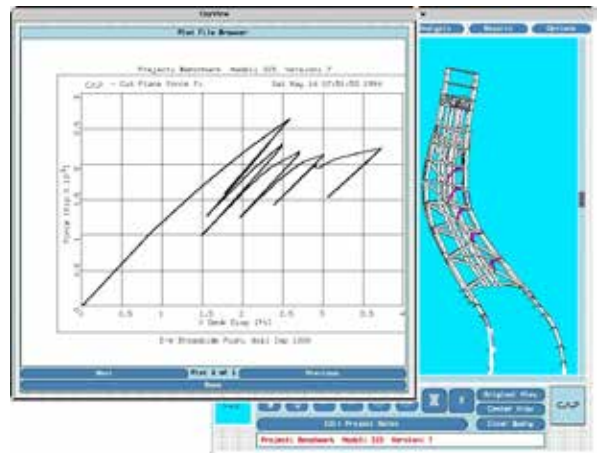
MMI offers a range of services including fitness-for-service, remnant life assessments, engineering criticality / substantiation services and asset integrity management of structures as well as pressure systems.

Asset integrity management services include:

- Asset Integrity Management System Development;
- Business Continuity Evaluation;
- Sustainability Evaluation;
- Engineering Criticality Assessment;
- Fitness for Service Evaluation;
- Remnant Life / Life Extension;
- Fracture Mechanics Assessment;
- Accident Investigation / Root Cause Assessment.



Limit State Design Services for Offshore Structures



Structural Risk Assessment



Plant Integrity Management

Our expertise in integrity and reliability assessments makes us the ideal choice for integrity management for major operators.

We offer a range of services, including fitness-for-service, remnant life assessments, engineering criticality/substantiation services and asset integrity management of structures, static equipment, and rotating equipment.

Integrity services include:

Mechanical

- Fracture Mechanics;
- Thermal Stress Analysis;
- Material Selection;
- Vibration Induced Failure (AVIFF);
- Flow-Induced Vibration (FIV);
- Rotating Equipment Loads.

Structural

- Structural Reliability Analysis;
- Wave and Green Sea Loads;
- Asset Life Extension;
- Accident and Failure Investigation;
- Fire-Damaged Integrity;
- Fixed and Floating Fatigue Life.

We're familiar with all the main assessment codes, including API579 Level 3, PD5500, R6, AVIFF, ASME, and DNV Standards.

Tools include ABAQUS, ANSYS, X-FEM, USFOS, and SESAM.



Due Diligence Services

Together with our parent company, Geosyntec, we are able to help our clients to understand and place a value on most aspects of technical due diligence.

We have extensive experience in helping clients to understand, quantify, visualize and communicate the technical environmental and safety risks posed by natural and manmade hazards to the oil and gas, water and wastewater, energy, government, industrial, and commercial markets.

We use a range of state-of-the-art engineering, science, and technology in combination with the practical design, construction, and project management experience of our staff. Depending on the objectives of the due diligence we are able to tailor our offering to address specific needs, ranging from a simple qualitative check-list based study, through to detailed analytical studies to provide quantitative evaluation of the risks.

We offer a full range of due diligence services depending on the level of detail required and the perceived risk. In general, a three stage approach is adopted:

Phase I – Screening Study

- Data room inspection (virtual / physical);
- Questionnaire and interviews;
- Site visit;
- Audit.

Phase II – Detailed Investigation

- Field investigations of high potential issues identified in Phase I;
- Detailed technical study of high potential issues identified in Phase I.

Phase III - Remediation

- Development of rectification and remediation solutions, based on the findings of the Phase II studies.

Our consultants understand how science and engineering should be incorporated into risk management strategies for true, pragmatic and cost effective risk reduction. We specialize in the appropriate application of innovative, high quality science and engineering to the evaluation and mitigation of risks posed by major hazards and threats.

Process & Flow Assurance

Some of the most difficult problems facing operators are assuring that production continues despite changing conditions. We use our fluid dynamic expertise to solve these problems.



We don't rely on a single software tool, but on a clear understanding of the physics of fluid mechanics. In particular, we are experts at complex gas dynamics problems, multi-phase flows, and non-Newtonian rheology. Services include:

Process

- Component Performance;
- Separation Optimization;
- Thermal Mixing;
- Three-Phase Separation;
- Flare System Performance;
- J-T Cooling.

Flow Assurance

- Subsea Cool-Down Studies;
- Hydrate Formation Prediction;
- Erosion Modeling;
- Valve Dynamics;
- Inhibitor Injection Performance;
- Unstable Flows.

Tools we use include ANSYS CFX/Fluent, Flowmaster, HYSYS, PIPENET, and Ledaflow.

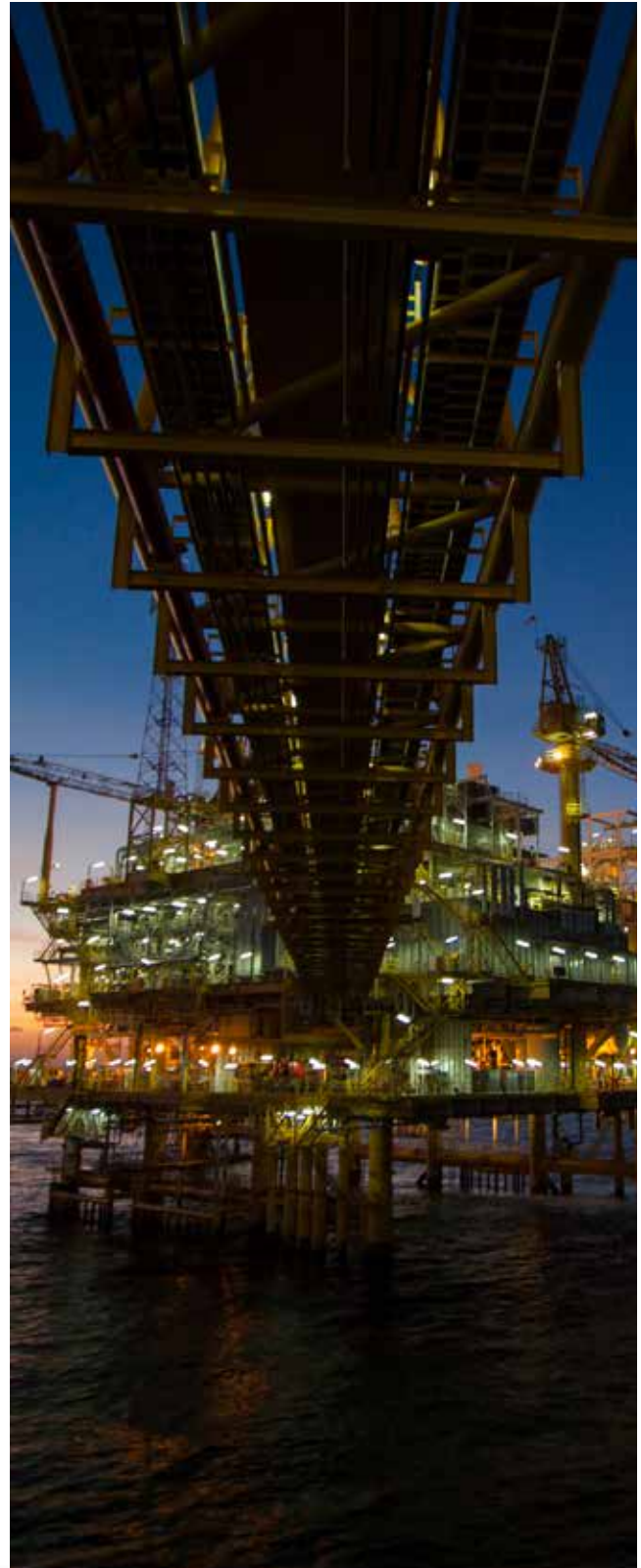
Production Efficiency

Operators must efficiently manage their operations in order to maximize returns. We help our clients manage operational and maintenance practices to get the best from their assets.

We have a vibrant mix of experienced operators and mathematical modelers to help our clients identify both quick wins and long-term investments that will add value to their business. Services include:

- Production profile modeling to identify problems in your asset - and connected assets, too;
- Root case analysis to establish why equipment really fails;
- Spares studies to optimize your spares holding and minimize production risk;
- Engineering financial analysis to support investment decisions beyond Net Present Value (NPV);
- Reliability analyses that identify critical items;
- Human factors studies to reduce the cause of human error.

The techniques we use include FMECA, RCM, RCA, FTA, and detailed studies of the physics of failure using CFD, FEA and electromagnetic analysis software. These mathematical techniques are deployed alongside an experienced team of operational practitioners, and together give our customers insight and clarity.



Our Oil & Gas Clients

We offer highly qualified and effective support to clients in the upstream, midstream, refining, petrochemical, LNG, storage and transportation sectors.



- Aker Solutions;
- AMEC Foster Wheeler;
- Anadarko;
- Apache;
- Bechtel;
- Bilfinger Salamis;
- Bluewater;
- BP;
- BG Group;
- Britannia;
- BSEE;
- BW Offshore;
- CB&I;
- Centrica;
- Chevron;
- Chevron Phillips;
- CNOOC Nexen;
- CNR;
- ConocoPhillips;
- Costain;
- DNO;
- ENI;
- EnQuest;
- ExxonMobil;
- Fairfield Energy;
- Fluor;
- GustoMSC;
- Hess;
- HSE;
- Hunt Oil;
- Husky Energy;
- Inpex;
- JGC;
- KBR;
- Maersk Oil;
- Marathon Oil;
- MODEC;
- Murphy Oil;
- Mustang;
- Petrofac;
- Petronas;
- Plains;
- Premier Oil;
- PTT;
- Sabic;
- Saipem;
- SBM;
- Shell;
- Siemens;
- Statoil;
- Talisman Sinopec;
- TAQA;
- Technip;
- Total;
- TPC;
- Woodside;
- WorleyParsons.

Our People

Our staff are recruited from the industry to support the industry. At least 30% of MMI consultants are PhD qualified, and many retain working links with academic institutions.

This ensures continuous innovation and the development of new approaches.

- MMI employs over 100 consultants worldwide, most of whom are qualified to MSc or PhD level;
- Our Oil & Gas experience covers design, construction and operations;
- We provide specialist design, analysis, safety report authoring and independent review services for the Nuclear Industry;
- MMI is a recognized leader in risk management in wind energy, marine energy, carbon capture and sequestration and hydrogen production, storage and use;
- Our consultants provide multi-hazard reliability assessment of critical lifelines, such as water and wastewater systems;
- MMI Engineering provides technical consulting services to support governments in the implementation of effective security and defence measures;
- We assist the insurance sector in understanding and mitigating site-specific risk;
- We are members of major industry bodies, including: American Petroleum Institute (API), Carbon Capture & Storage Association (CCSA), Center for Chemical Process Safety (CCPS), Fire and Blast Information Group (FABIG), Mary Kay O'Connor Process Safety Center (MKOPSC), Register of Security Engineers and Specialists (RSES), Society of Petroleum Engineers (SPE), UK Hydrogen and Fuel Cell Association.



engineers • scientists • innovators

UNITED KINGDOM

Aberdeen

KMD Business Centre
Wellington Circle
Altens
Aberdeen AB12 3JG
Tel: +44 (0) 1224 217 354

Bristol

Suite 7
Corum 2
Corum Office Park
Crown Way
Warmley
Bristol, BS30 8FJ
Tel: +44 (0) 117 960 2212

London

6 - 9 The Square
Stockley Park
Uxbridge
London
UB11 1FW
Tel: +44 (0) 203 178 4822

Northern Ireland

Unit 4 The Courtyard
Galgorm Castle
Ballymena
Co. Antrim BT42 1HL
Tel: +44 (0) 28 256 32916

Warrington

The Brew House
Wilderspool Park
Greenall's Avenue
Warrington
Cheshire WA4 6HL
Tel: +44 (0) 1925 230 655

York

Apollo House
Eboracum Way
York YO31 7RE
Tel: +44 (0) 1904 428721

UNITED STATES

Houston

11490 Westheimer, Suite 150
Houston, Texas 77077
Tel: +1 281-920-4600

San Francisco

1111 Broadway, 6th Floor
Oakland, California 94607
Tel: +1 510-836-3002

Los Angeles

2100 Main Street, Suite 150
Huntington Beach
California 92648
Tel: +1 714-465-1390

AUSTRALIA

Melbourne

Level 27, Rialto South Tower
525 Collins Street
Melbourne
Victoria 3000
Tel: +61 (0) 3 9935 2988

Perth

PO Box 5725
St George's Terrace
Perth
WA 6000
Tel: +61 (8) 9481 3988

MALAYSIA

Kuala Lumpur

Unit 1, Level 3A
Block B East Wing
PJ8, 46050
Petaling Jaya, Selangor
Malaysia

Ipoh

80-82 Jalan Kilang Bukit
Merah, Kawasan
Perindustrian Bukit Merah
31500 Lahat, Ipoh, Perak Darul
Ridzuan, Malaysia
Tel: +60 (5) 323 5301

www.mmiengineering.com

Engineering a Safer World